

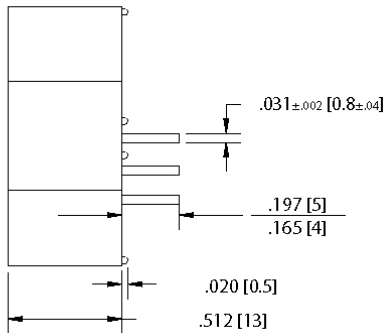
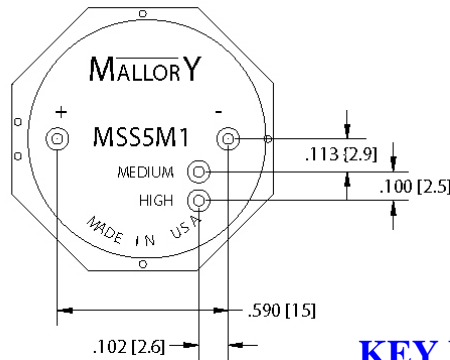
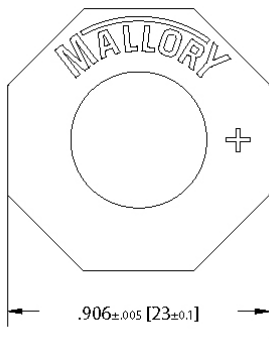


MALLORY SONALERT PRODUCTS, INC.

# Product APPLICATION Guide



## Part Number: MSS5M1 For IEC60601-1-8 Medical Applications



### KEY FEATURES:

- Designed to Meet IEC 60601-1-8
- 975 Hz Fundamental Frequency
- 4 Harmonic Peaks within  $\pm 15$  dB (1 to 4 kHz)
- 88 dB @ 10 cm Typical
- Three priority sounds (low, medium, & high)

### Specifications:

**Voltage Range:**  $5.0 \pm 0.5$  Vdc  
**Sound Level:** 88 dB @ 10 cm Typical  
**Frequency:**  $975 \pm 24$  Hz  
**Sound Harmonics:** Minimum of 4 (1 to 4 kHz)  
**Operating Temp:**  $-30^{\circ}\text{C}$  to  $+70^{\circ}\text{C}$   
**Storage Temp:**  $-30^{\circ}\text{C}$  to  $+70^{\circ}\text{C}$   
**Case Material:** Valox (UL94-V0)  
**Current Level:**  $< 250$  mA during BEEP time  
 $< 10$  mA during PAUSE time

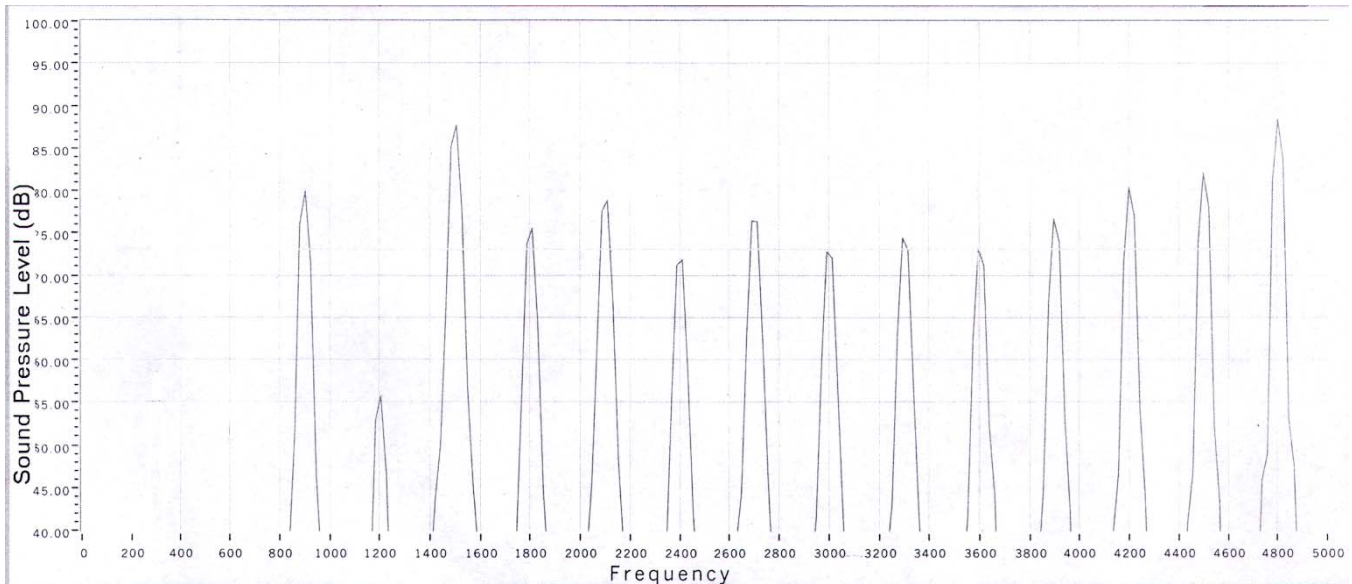
**\*Low Priority Signal:** 2 Beeps that Repeat  
**\*Med Priority Signal:** 3 Beeps that Repeat  
**\*High Priority Signal:** 10 Beeps that Repeat

\*per IEC 60601-1-8 Tables 203 & 204

Continued

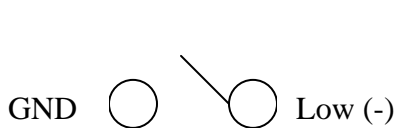
# MSS5M1 Alarm (Con't)

## Frequency Response:

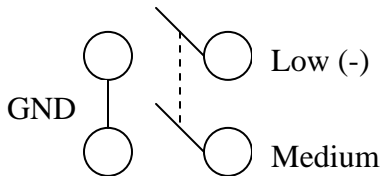


As shown above, the fundamental frequency is 975 Hz, and there are more than 4 harmonic peaks between 1 and 4 kHz. All harmonic peaks are within  $\pm 15$  dB of the fundamental frequency

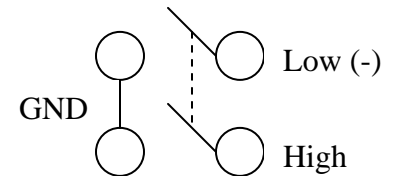
## Priority Signal Activation:



**Low Priority**



**Medium Priority**



**High Priority**

## Priority Signal Details:

- **Low Priority:** *Beep*, Pause 200ms, *Beep*; Repeat every 20 sec's
- **Med Priority:** *Beep*, Pause 200ms, *Beep*, Pause 200ms, *Beep*; Repeat every 7.5 sec's
- **High Priority:** *Beep*, Pause 100ms, *Beep*, Pause 100ms, *Beep*, Pause 300ms, *Beep*, Pause 100ms, *Beep*, Pause 500ms, *Beep*, Pause 100ms, *Beep*, Pause 100ms, *Beep*, Pause 300ms, *Beep*, Pause 100ms, *Beep*; Repeat every 2.5 sec's

Note: Beep “on” time is 100ms (high priority) & 200ms (low & medium priority).

Call 317-612-1000 or Visit [www.mallory-sonalert.com](http://www.mallory-sonalert.com) for More Details